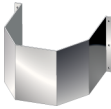


### DESCRIPTION

Quadruple wall mounted stainless steel collective hand wash/sink, 1822 x 476 x 203 mm (71<sup>3</sup>/<sub>4</sub> x 18<sup>3</sup>/<sub>4</sub> x 8 in), type 304, #4 finish, 16 gauge, radius corner, rounded rim, backsplash 203 mm (8 in.), heavy duty hangar plate, 89 mm (3<sup>1</sup>/<sub>2</sub> in) basket strainer assembly situated in center of bowl. Backsplash predrilled as per required.



CT : Stainless steel pipe cover (option)

### OPTIONS

- |   |  |
|---|--|
| <input type="checkbox"/> <b>316</b> Type 316 stainless steel  | <input type="checkbox"/> <b>34</b> 3 holes 4 in center   |
| <input type="checkbox"/> <b>CT</b> Stainless steel pipe cover | <input type="checkbox"/> <b>28</b> 2 holes 8 in center   |
| <input type="checkbox"/> <b>ST</b> No holes                   | <input type="checkbox"/> <b>38</b> 3 holes 8 in center   |
| <input type="checkbox"/> <b>10</b> Single hole                | <input type="checkbox"/> <b>PS</b> Special hole drilling |
| <input type="checkbox"/> <b>24</b> 2 holes 4 in center        | _____ Number of installed faucets                        |

**MEETS STANDARDS**  
**ASME A112.19.3**  
**CSA B45.4-08 (R2013)**

**ALL TOLERANCES**  
**± 5 MM UNLESS**  
**OTHERWISE NOTED**

